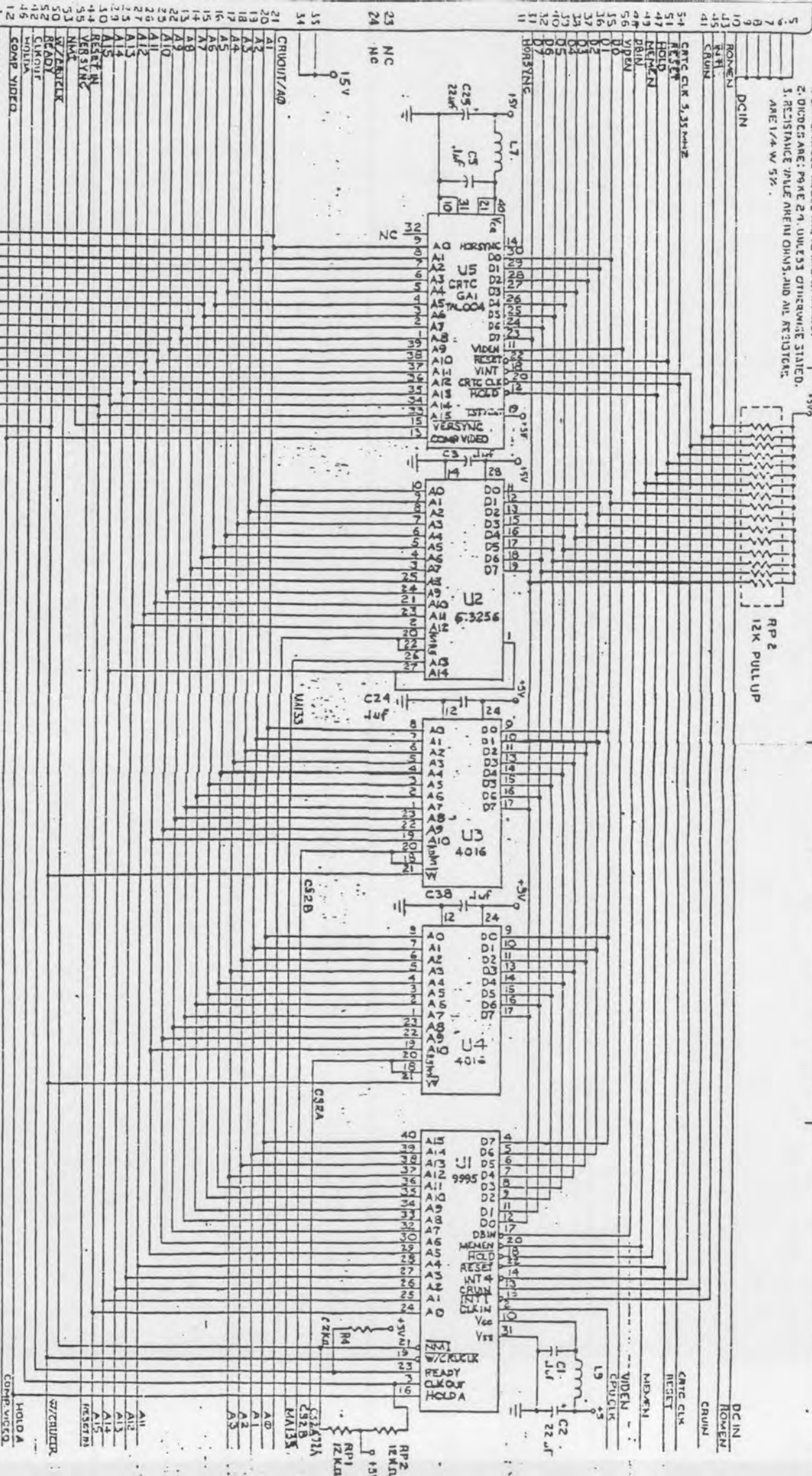
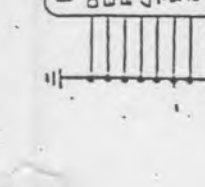


1. CAPACITANCE VALUES ARE IN MICROFARADS.
2. DIODES ARE: PN 1E 2.9, UNLESS OTHERWISE STATED.
3. RESISTANCE VALUE IN OHMS, AND ALL RESISTORS ARE 1/4 W 5%.



QTY	PART NUMBER	DESCRIPTION	MATERIAL	REMARKS
1	605	TI 99/2 MAIN LOGIC RD SCHEMATIC		



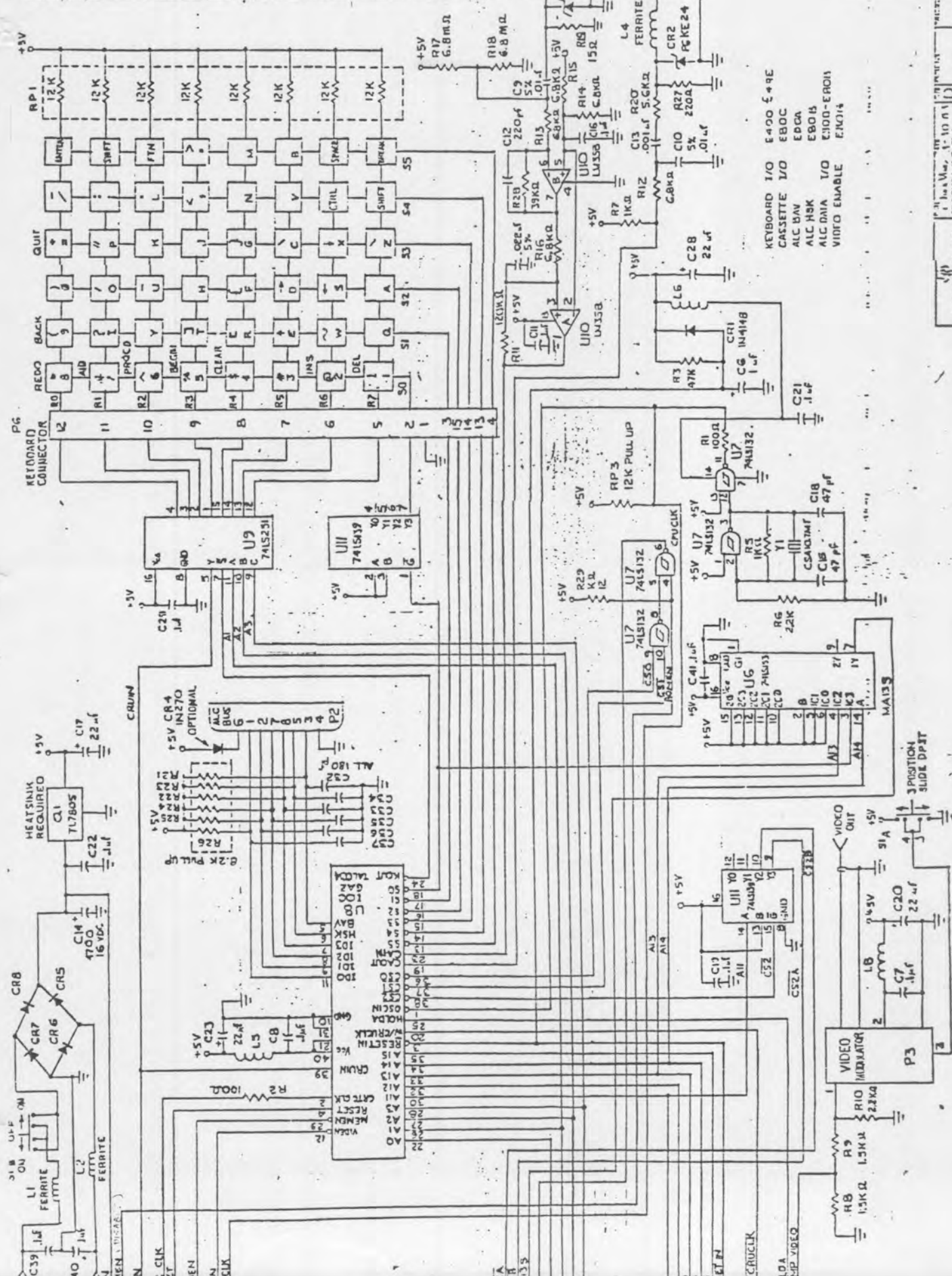
15V
12K PULL UP
RP1
RP2

CRU MAP

0000	RESERVED
1000	RESERVED
2000	RESERVED
3000	RESERVED
4000	RESERVED
5000	RESERVED
6000	RESERVED
7000	RESERVED
8000	RESERVED
9000	RESERVED
A000	RESERVED
B000	RESERVED
C000	RESERVED
D000	RESERVED
E000	RESERVED
F000	RESERVED
FFF0	RESERVED

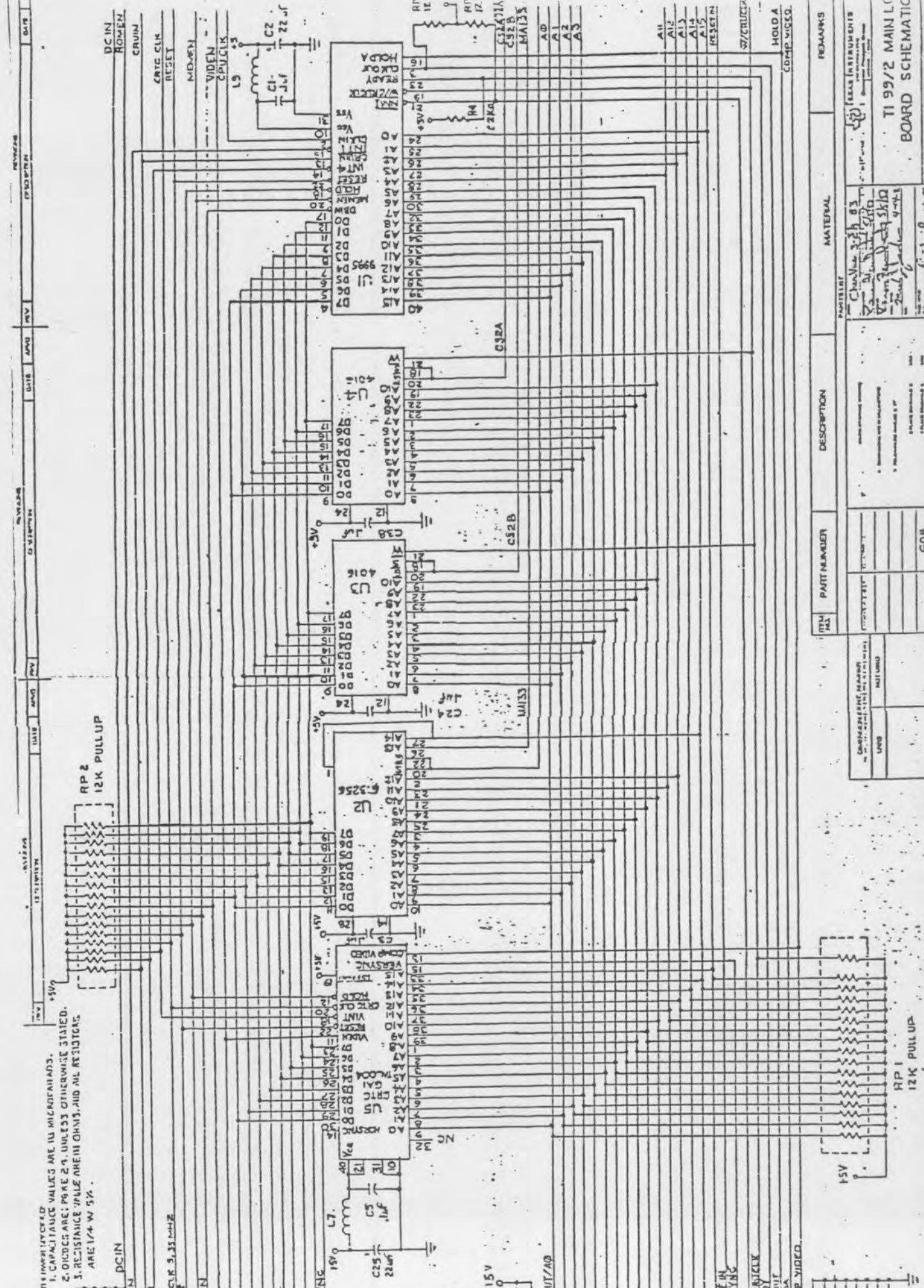
MEMORY MAP

0000	SYSTEM ROM
000A	SYSTEM ROM
0010	SYSTEM ROM
0020	SYSTEM ROM
0030	SYSTEM ROM
0040	SYSTEM ROM
0050	SYSTEM ROM
0060	SYSTEM ROM
0070	SYSTEM ROM
0080	SYSTEM ROM
0090	SYSTEM ROM
00A0	SYSTEM ROM
00B0	SYSTEM ROM
00C0	SYSTEM ROM
00D0	SYSTEM ROM
00E0	SYSTEM ROM
00F0	SYSTEM ROM
0100	SYSTEM ROM
0110	SYSTEM ROM
0120	SYSTEM ROM
0130	SYSTEM ROM
0140	SYSTEM ROM
0150	SYSTEM ROM
0160	SYSTEM ROM
0170	SYSTEM ROM
0180	SYSTEM ROM
0190	SYSTEM ROM
01A0	SYSTEM ROM
01B0	SYSTEM ROM
01C0	SYSTEM ROM
01D0	SYSTEM ROM
01E0	SYSTEM ROM
01F0	SYSTEM ROM
0200	SYSTEM ROM
0210	SYSTEM ROM
0220	SYSTEM ROM
0230	SYSTEM ROM
0240	SYSTEM ROM
0250	SYSTEM ROM
0260	SYSTEM ROM
0270	SYSTEM ROM
0280	SYSTEM ROM
0290	SYSTEM ROM
02A0	SYSTEM ROM
02B0	SYSTEM ROM
02C0	SYSTEM ROM
02D0	SYSTEM ROM
02E0	SYSTEM ROM
02F0	SYSTEM ROM
0300	SYSTEM ROM
0310	SYSTEM ROM
0320	SYSTEM ROM
0330	SYSTEM ROM
0340	SYSTEM ROM
0350	SYSTEM ROM
0360	SYSTEM ROM
0370	SYSTEM ROM
0380	SYSTEM ROM
0390	SYSTEM ROM
03A0	SYSTEM ROM
03B0	SYSTEM ROM
03C0	SYSTEM ROM
03D0	SYSTEM ROM
03E0	SYSTEM ROM
03F0	SYSTEM ROM
0400	SYSTEM ROM
0410	SYSTEM ROM
0420	SYSTEM ROM
0430	SYSTEM ROM
0440	SYSTEM ROM
0450	SYSTEM ROM
0460	SYSTEM ROM
0470	SYSTEM ROM
0480	SYSTEM ROM
0490	SYSTEM ROM
04A0	SYSTEM ROM
04B0	SYSTEM ROM
04C0	SYSTEM ROM
04D0	SYSTEM ROM
04E0	SYSTEM ROM
04F0	SYSTEM ROM
0500	SYSTEM ROM
0510	SYSTEM ROM
0520	SYSTEM ROM
0530	SYSTEM ROM
0540	SYSTEM ROM
0550	SYSTEM ROM
0560	SYSTEM ROM
0570	SYSTEM ROM
0580	SYSTEM ROM
0590	SYSTEM ROM
05A0	SYSTEM ROM
05B0	SYSTEM ROM
05C0	SYSTEM ROM
05D0	SYSTEM ROM
05E0	SYSTEM ROM
05F0	SYSTEM ROM
0600	SYSTEM ROM
0610	SYSTEM ROM
0620	SYSTEM ROM
0630	SYSTEM ROM
0640	SYSTEM ROM
0650	SYSTEM ROM
0660	SYSTEM ROM
0670	SYSTEM ROM
0680	SYSTEM ROM
0690	SYSTEM ROM
06A0	SYSTEM ROM
06B0	SYSTEM ROM
06C0	SYSTEM ROM
06D0	SYSTEM ROM
06E0	SYSTEM ROM
06F0	SYSTEM ROM
0700	SYSTEM ROM
0710	SYSTEM ROM
0720	SYSTEM ROM
0730	SYSTEM ROM
0740	SYSTEM ROM
0750	SYSTEM ROM
0760	SYSTEM ROM
0770	SYSTEM ROM
0780	SYSTEM ROM
0790	SYSTEM ROM
07A0	SYSTEM ROM
07B0	SYSTEM ROM
07C0	SYSTEM ROM
07D0	SYSTEM ROM
07E0	SYSTEM ROM
07F0	SYSTEM ROM
0800	SYSTEM ROM
0810	SYSTEM ROM
0820	SYSTEM ROM
0830	SYSTEM ROM
0840	SYSTEM ROM
0850	SYSTEM ROM
0860	SYSTEM ROM
0870	SYSTEM ROM
0880	SYSTEM ROM
0890	SYSTEM ROM
08A0	SYSTEM ROM
08B0	SYSTEM ROM
08C0	SYSTEM ROM
08D0	SYSTEM ROM
08E0	SYSTEM ROM
08F0	SYSTEM ROM
0900	SYSTEM ROM
0910	SYSTEM ROM
0920	SYSTEM ROM
0930	SYSTEM ROM
0940	SYSTEM ROM
0950	SYSTEM ROM
0960	SYSTEM ROM
0970	SYSTEM ROM
0980	SYSTEM ROM
0990	SYSTEM ROM
09A0	SYSTEM ROM
09B0	SYSTEM ROM
09C0	SYSTEM ROM
09D0	SYSTEM ROM
09E0	SYSTEM ROM
09F0	SYSTEM ROM
0A00	SYSTEM ROM
0A10	SYSTEM ROM
0A20	SYSTEM ROM
0A30	SYSTEM ROM
0A40	SYSTEM ROM
0A50	SYSTEM ROM
0A60	SYSTEM ROM
0A70	SYSTEM ROM
0A80	SYSTEM ROM
0A90	SYSTEM ROM
0AA0	SYSTEM ROM
0AB0	SYSTEM ROM
0AC0	SYSTEM ROM
0AD0	SYSTEM ROM
0AE0	SYSTEM ROM
0AF0	SYSTEM ROM
0B00	SYSTEM ROM
0B10	SYSTEM ROM
0B20	SYSTEM ROM
0B30	SYSTEM ROM
0B40	SYSTEM ROM
0B50	SYSTEM ROM
0B60	SYSTEM ROM
0B70	SYSTEM ROM
0B80	SYSTEM ROM
0B90	SYSTEM ROM
0BA0	SYSTEM ROM
0BB0	SYSTEM ROM
0BC0	SYSTEM ROM
0BD0	SYSTEM ROM
0BE0	SYSTEM ROM
0BF0	SYSTEM ROM
0C00	SYSTEM ROM
0C10	SYSTEM ROM
0C20	SYSTEM ROM
0C30	SYSTEM ROM
0C40	SYSTEM ROM
0C50	SYSTEM ROM
0C60	SYSTEM ROM
0C70	SYSTEM ROM
0C80	SYSTEM ROM
0C90	SYSTEM ROM
0CA0	SYSTEM ROM
0CB0	SYSTEM ROM
0CC0	SYSTEM ROM
0CD0	SYSTEM ROM
0CE0	SYSTEM ROM
0CF0	SYSTEM ROM
0D00	SYSTEM ROM
0D10	SYSTEM ROM
0D20	SYSTEM ROM
0D30	SYSTEM ROM
0D40	SYSTEM ROM
0D50	SYSTEM ROM
0D60	SYSTEM ROM
0D70	SYSTEM ROM
0D80	SYSTEM ROM
0D90	SYSTEM ROM
0DA0	SYSTEM ROM
0DB0	SYSTEM ROM
0DC0	SYSTEM ROM
0DD0	SYSTEM ROM
0DE0	SYSTEM ROM
0DF0	SYSTEM ROM
0E00	SYSTEM ROM
0E10	SYSTEM ROM
0E20	SYSTEM ROM
0E30	SYSTEM ROM
0E40	SYSTEM ROM
0E50	SYSTEM ROM
0E60	SYSTEM ROM
0E70	SYSTEM ROM
0E80	SYSTEM ROM
0E90	SYSTEM ROM
0EA0	SYSTEM ROM
0EB0	SYSTEM ROM
0EC0	SYSTEM ROM
0ED0	SYSTEM ROM
0EE0	SYSTEM ROM
0EF0	SYSTEM ROM
0F00	SYSTEM ROM
0F10	SYSTEM ROM
0F20	SYSTEM ROM
0F30	SYSTEM ROM
0F40	SYSTEM ROM
0F50	SYSTEM ROM
0F60	SYSTEM ROM
0F70	SYSTEM ROM
0F80	SYSTEM ROM
0F90	SYSTEM ROM
0FA0	SYSTEM ROM
0FB0	SYSTEM ROM
0FC0	SYSTEM ROM
0FD0	SYSTEM ROM
0FE0	SYSTEM ROM
0FF0	SYSTEM ROM



KEYBOARD I/O E-400 E-49E
 CASSETTE I/O E80C
 ALC B/W EDCA
 ALC HSK E801B
 ALC DMA I/O E100-ER011
 VIDEO ENABLE E1014

1055197



1. CAPACITANCE VALUES ARE IN MICROFARADS.
 2. DDCDS ARE: P9 RE 2.9, UNLESS OTHERWISE STATED.
 3. RESISTANCE VALUE ARE IN OHMS, AND ALL RESISTORS ARE 1/4 W 5%.

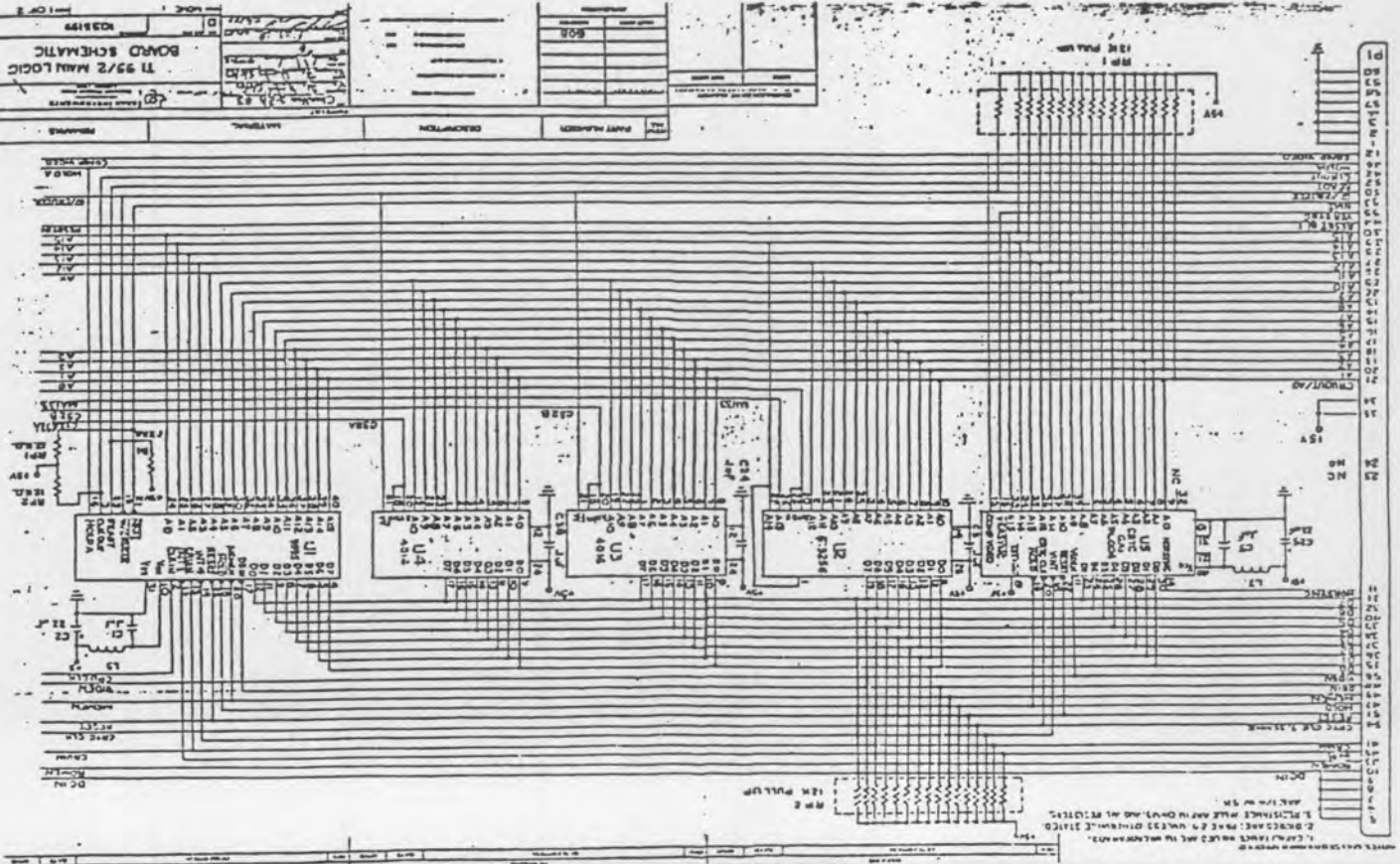
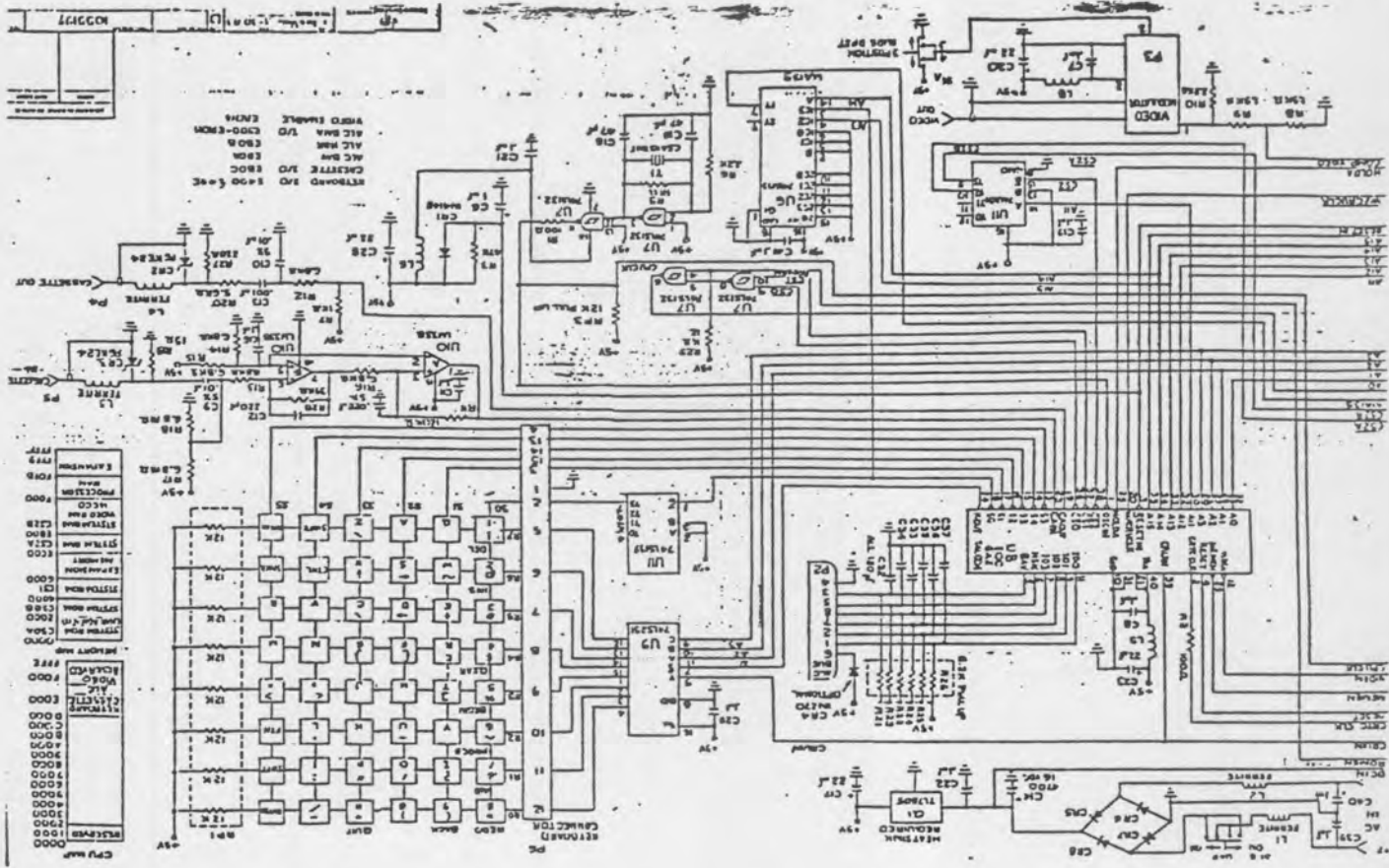
REV	DATE	BY	CHKD	DESCRIPTION
001				REVISED

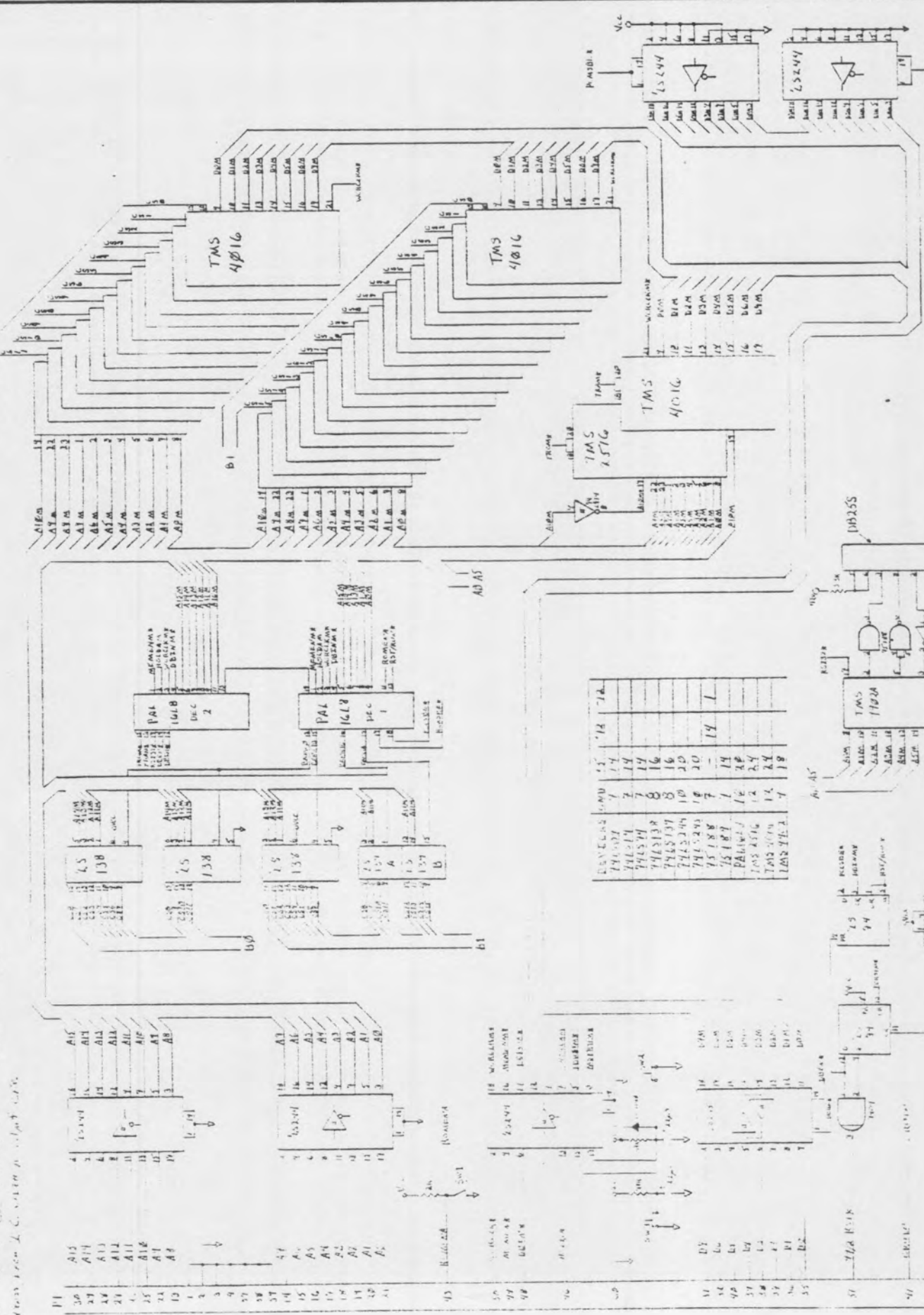
ITEM NO.	PART NUMBER	DESCRIPTION	MATERIAL	REMARKS
1	74181	ALU	TI	
2	74180	MUX	TI	
3	74188	BCD DECODE	TI	
4	RESISTORS	VARIOUS	VARIOUS	
5	CAPACITORS	VARIOUS	VARIOUS	
6	INDUCTORS	VARIOUS	VARIOUS	
7	IC'S	VARIOUS	VARIOUS	
8	CONNECTORS	VARIOUS	VARIOUS	
9	WIRE	VARIOUS	VARIOUS	
10	PCB	TI 99/2 MAIN LOGIC BOARD	TI	

TI 99/2 MAIN LOGIC BOARD SCHEMATIC
 1055199

99/2 MEMORY

LOC	DATA _x		
0000	EB72	01C6	0380
2	0014		0609
4	EB72		1501
6	01C6		04C9
8	EB72		0380
A	00FA		EB6C
C	F00C		01D4
E	01BC		0300
10	EB66		0003
12	01C8		C1BE
14	0203		C1
16	E000		
18	0420		
1A	39D4		
1C	0201		
1E	0400		
20	6060		
22	4000		
24	0A51		
26	0420		
28	39		





DEV	CLAS	COM	13	14	15	16	17	18	19	20	21	22	23	24	25	26	27	28	29	30	31	32	33	34	35	36	37	38	39	40	41	42	43	44	45	46	47	48	49	50	51	52	53	54	55	56	57	58	59	60	61	62	63	64	65	66	67	68	69	70	71	72	73	74	75	76	77	78	79	80	81	82	83	84	85	86	87	88	89	90	91	92	93	94	95	96	97	98	99	100									
1	2	3	4	5	6	7	8	9	10	11	12	13	14	15	16	17	18	19	20	21	22	23	24	25	26	27	28	29	30	31	32	33	34	35	36	37	38	39	40	41	42	43	44	45	46	47	48	49	50	51	52	53	54	55	56	57	58	59	60	61	62	63	64	65	66	67	68	69	70	71	72	73	74	75	76	77	78	79	80	81	82	83	84	85	86	87	88	89	90	91	92	93	94	95	96	97	98	99	100

1. ...
2. ...
3. ...

